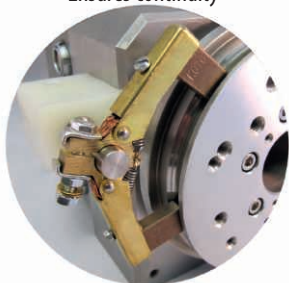


## TOOLING OPTIONS

### EDM GROUND SYSTEM

Ensures continuity



EGS-F

\$395

### LEVELING HEAD

Eliminates fixture shimming



LH-RIF

\$1325

### V-BLOCK

Capacity 1 1/2", stainless steel

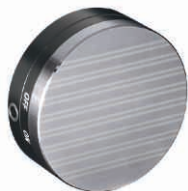


VB

\$1225

### ROUND MAGNETIC CHUCK

See page 4.



### STAINLESS STEEL CHUCKS

See page 12.



### REFERENCING SYSTEMS

See page 16.

**system 3R**

EROWA®



**CARL  
HIRSCH  
MANN®**